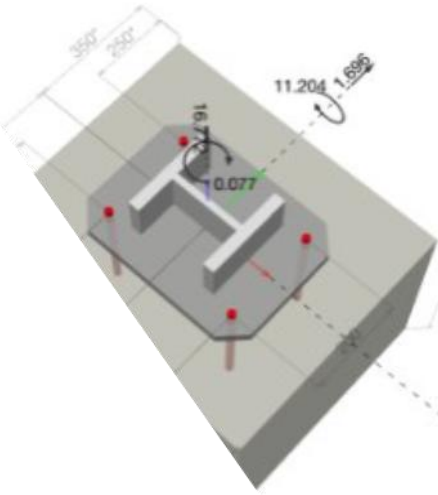


PROFIS ENGINEERING & CHECKBOT

“THE NEW STRUCTURAL
ENGINEERING END-TO-END
WORKFLOW STANDARD”



Parameters (kN/m²)	
My	M
11.204	
-0.073	
16	
1	

Revolutionizing Structural Engineering: The Power of PROFIS Engineering Integration with Checkbot

Hilti Group and IDEA StatiCa, global leaders in steel-to-concrete and steel-to-steel structural connections respectively, have partnered to introduce a new plugin to enhance the standard design, calculation, and construction workflow for all types of projects. The integration of Hilti Group's PROFIS Engineering Suite with IDEA StatiCa's Checkbot improves accuracy, safety, and efficiency in the construction industry. PROFIS Engineering Suite, which has a presence in over 70 countries, allows the design and calculation of various structural connections under a range of conditions. It provides the latest anchor approvals, a variety of design methods, and a comprehensive calculation report.

Checkbot simplifies communication from various structural design and BIM software by allowing the import of thousands of connections with their loads and geometries, where you can check all important information in each of these connections before exporting them to PROFIS Engineering Suite or other software developed by IDEA Statica. This ensures that all information is correctly and quickly mapped across the end-to-end design and calculation workflow.

This integration brings several benefits, including time saving and simplification, easier organization, better collaboration, and increased accuracy and quality. By setting a new standard for the structural engineering and construction end-to-end workflow, this empowers engineers to take their projects to new levels in terms of quality, efficiency, and precision while providing peace of mind. By adopting this unified approach, structural engineers are well-prepared for the challenges the industry currently faces as well as those that will come.

Follow the guidance below to learn how to get started. If you own:

- Tekla Structures, Revit, Advance Steel, Robot, SCIA Engineer, SDS2, STAAD.PRO, AxisVM, RFEM 5 and RSTAB 8, [click here](#).
- RFEM 6 and RSTAB 9, [click here](#).
- SAP 2000 and ETABS, [click here](#).
- RISA-3D and RAM Structural Systems, [click here](#).

Revolutionizing Structural Engineering: The Power of PROFIS Engineering Integration with Checkbot

Category 1: Automated integration

Software supported by this installation procedure: Advance Steel, AxisVM, Revit, Robot, RFEM 5, RSTAB 8, SCIA Engineer, SDS2, STAAD.PRO, Tekla Structures.

The IDEA StatiCa BIM link installer automatically launches after the installation of any IDEA StatiCa software and can also be accessed manually from IDEA StatiCa's main interface. It locates all structural design and BIM software packages on your machine. Once integrated, IDEA StatiCa Checkbot is available through the FEA/BIM partner application, enabling the seamless export of baseplate data to PROFIS Engineering.

Before you start: Ensure you have an active PROFIS Engineering Premium License (can be purchased [here](#)) and confirm that your required FEA/BIM software is installed and up to date. Only the two latest versions are supported. Then follow these steps:

1. **Download and Account Setup:** Create an account with IDEA StatiCa ([here](#)) and download their latest suite version ([here](#)).
2. **Installation:** Install the suite as an administrator. The required plugin to connect with PROFIS Engineering is included in the download package.
3. **BIM Link Activation:** During installation, you will be prompted to “Activate your BIM links.” Ensure this step is completed successfully.
4. **Finalizing Installation:** Click “Install.” Once the installation is complete and displays
5. green, you will find a new tab in your FEA/BIM software for exporting to Checkbot.
6. **Exporting Data:** Once the file is imported to Checkbot, under the “Hilti PROFIS” tab, click the red logo of PROFIS Engineering to transfer your data and start designing your connection.

Revolutionizing Structural Engineering: The Power of PROFIS Engineering Integration with Checkbot

Category 2: Automated external integration

Software supported by this installation procedure: RFEM 6 and RSTAB 9.

The IDEA StatiCa BIM link installer automatically launches after the installation of any IDEA software and can also be accessed manually from IDEA StatiCa's main interface. It will locate all structural design and BIM software packages on your machine. The BIM link to Checkbot is NOT available in the partner application user interface. It is a separate executable file that you can find on your desktop and needs to be run every time a user wants to proceed with an export.

Before you start: Ensure you have an active PROFIS Engineering Premium License (can be purchased [here](#)) and confirm that your required FEA/BIM software is installed and up to date. Only the two latest versions are supported. Then follow these steps:

1. **Download and Account Setup:** Create an account with IDEA StatiCa ([here](#)) and download their latest suite version ([here](#)).
2. **Installation:** Install the suite as an administrator. The required plugin to connect with PROFIS Engineering is included in the download package.
3. **BIM Link Activation:** During installation, you will be prompted to “Activate your BIM links.” Ensure this step is completed successfully.
4. **Finalizing Installation:** Click “Install.” Once the installation is complete and displays green, you will find a new shortcut icon on your desktop for exporting to Checkbot. Ensure you open the software and navigate to the menu “Options and Program”, then activate the WebService to enable data transfer.
5. **Exporting Data:** Once the file is imported to Checkbot, under the “Hilti PROFIS” tab, click the red logo of PROFIS Engineering to transfer your data and start designing your connection.

Revolutionizing Structural Engineering: The Power of PROFIS Engineering Integration with Checkbot

Category 3: Manual integration

Software supported under this installation procedure: SAP 2000 and ETABS

IDEA Checkbot is integrated manually according to the step-by-step tutorial. Instructions are accessible through a URL in the BIMlink installer, via IDEA web pages or following the steps given below.

Before you start: Ensure you have an active PROFIS Engineering Premium License (can be purchased [here](#)) and confirm that your desired FEA/BIM software* is installed and up-to-date. Only the two latest versions are supported. Then follow these steps:

1. **Download and Account Setup:** Create an account with IDEA StatiCa ([here](#)) and download their latest suite version ([here](#)).
2. **Installation:** Install the suite as an administrator. The plugin required to connect with PROFIS Engineering is included in the download package.
3. **BIM Link Activation:** During installation, you will be prompted to “Activate your BIM links.” Ensure this step is completed successfully.
4. **Finalizing Installation:** Click “Please install our add-in for your SAP2000 ([here](#)), ETABS ([here](#))”, and follow activation guideline shared by our partners from IDEA StatiCa.
5. **Exporting Data:** Once the file is imported to Checkbot, under the “Hilti PROFIS” tab, click on the red logo of PROFIS Engineering to transfer your data to it.

Revolutionizing Structural Engineering: The Power of PROFIS Engineering Integration with Checkbot

Category 4: File based

Software supported under this installation procedure: RISA-3D and RAM Structural Systems

File-based import to IDEA Checkbot. There is no direct communication between IDEA Checkbot and partner application.

Before you start: Ensure you have an active PROFIS Engineering Premium License (can be purchased [here](#)) and confirm that your desired FEA/BIM software* is installed and up-to-date. Only the two latest versions are supported. Then follow these steps:

1. **Download and Account Setup:** Create an account with IDEA StatiCa ([here](#)) and download their latest suite version ([here](#)).
2. **Installation:** Install the suite as an administrator. The plugin required to connect with PROFIS Engineering is included in the download package.
3. **Finalizing Installation:** Follow workflow using following links: RISA-3D ([here](#)) and RAM Structural Systems ([here](#))
4. **Exporting Data:** Once the file is imported to Checkbot, under the “Hilti PROFIS” tab, click on the red logo of PROFIS Engineering to transfer your data to it.

Revolutionizing Structural Engineering: The Power of PROFIS Engineering Integration with Checkbot

LIST OF ALL SUPPORTED FEA AND CAD SOFTWARE BY CHECKBOT

Software	Vendor	Type
<u>Tekla Structures</u>	Trimble	CAD
<u>Autodesk Revit</u>	Autodesk	FEA/CAD
<u>Autodesk Advanced Steel</u>	Autodesk	CAD
<u>Autodesk Robot</u>	Autodesk	FEA
<u>ETABS</u>	Csi	FEA
<u>SAP2000</u>	Csi	FEA
<u>SCIA Engineer</u>	Nemetschek	FEA
<u>SDS2</u>	Allplan	CAD
<u>STAAD.Pro</u>	Bentley	FEA
<u>AxisVM</u>	Inter-CAD kft	FEA
<u>RFEM 5</u>	Dlubal	FEA
<u>RFEM 6</u>	Dlubal	FEA
<u>RSTAB 8</u>	Dlubal	FEA
<u>RSTAB 9</u>	Dlubal	FEA
<u>RAM Structural System</u>	Bentley	FEA
<u>RISA</u>	RISA Tech	FEA
<u>Sofistik (SAF)</u>	Sofistik	FEA
<u>Tekla Structural Designer</u>	Trimble	FEA
<u>FEM-Design</u>	StruSoft	FEA
<u>SPACE GASS</u>	SPACE GASS	FEA
<u>Diamonds / BIM Expert</u>	BuildSoft	FEA/CAD
<u>STRAP</u>	Atir Engineering	FEA
<u>Straus 7</u>	EnginSoft	FEA

FEA: Finite Element Analysis or Structural Software

CAD: BIM Software

Note: Data from software not included in the list can be uploaded directly to Checkbot via a *.saf file

Note: software not included in the list can be uploaded directly to Checkbot via .SAF file